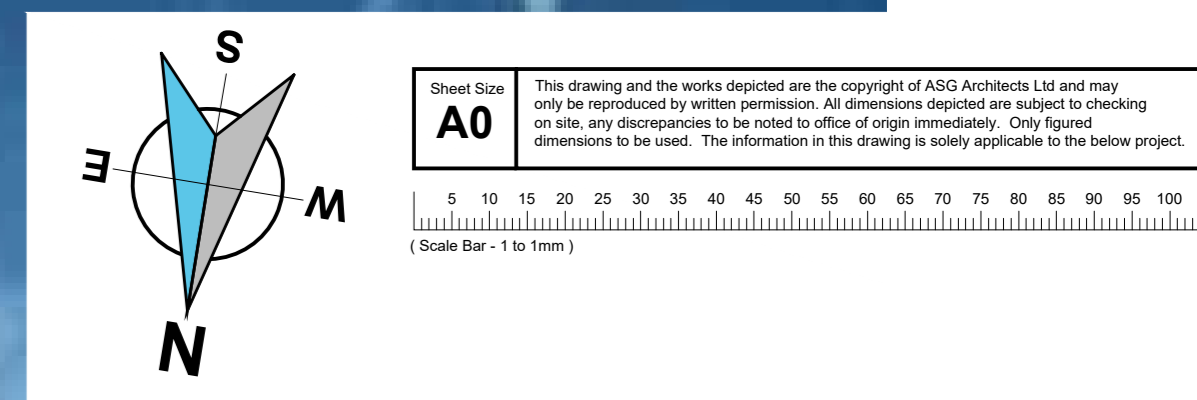




Streetscene (Scale = 1:350)



PROPOSED Ground Floor

(Scale = 1:100)



Proposed Front Elevation (North Elevation)



Proposed Side Elevation (East Elevation)

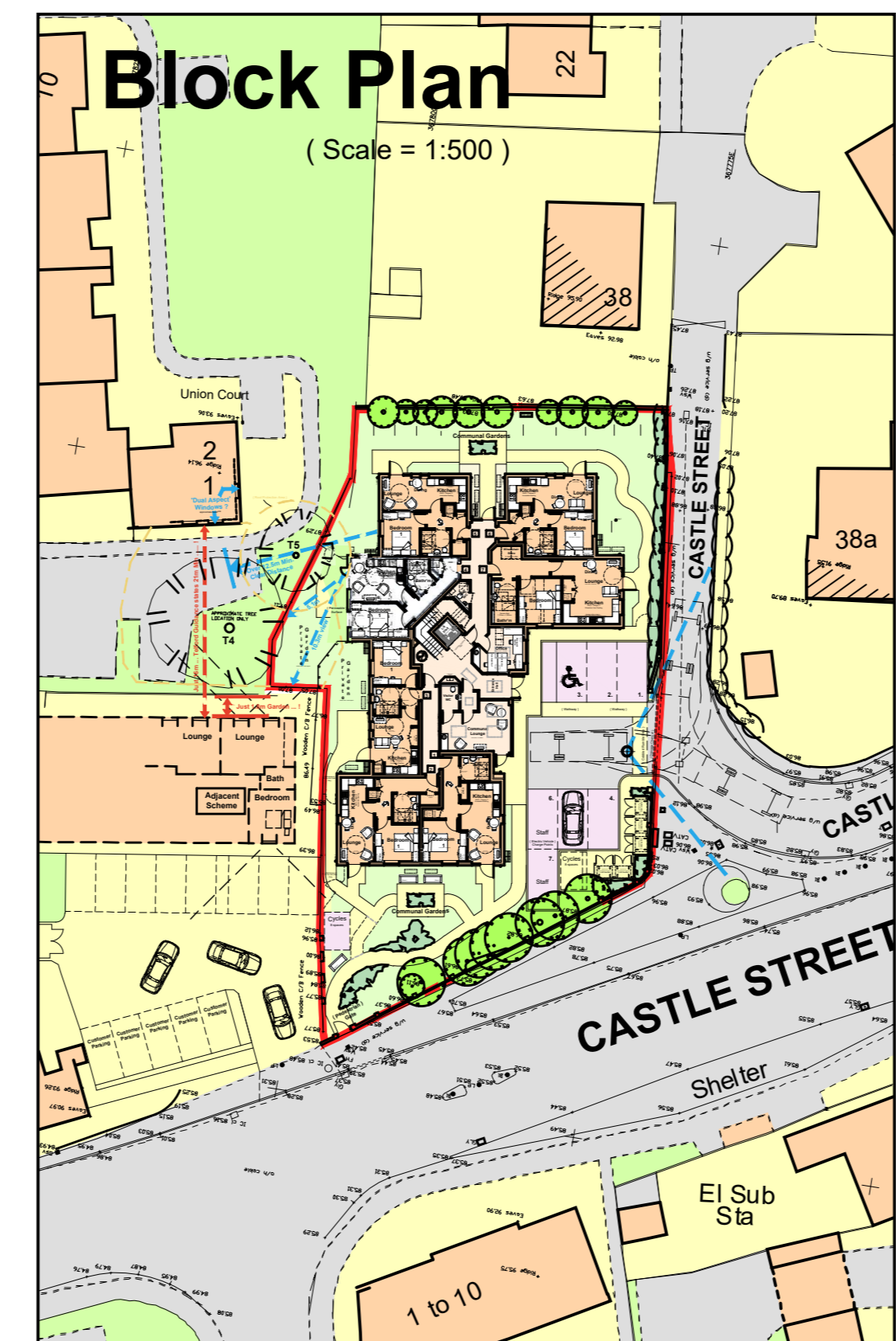


Proposed Side Elevation (West Elevation)



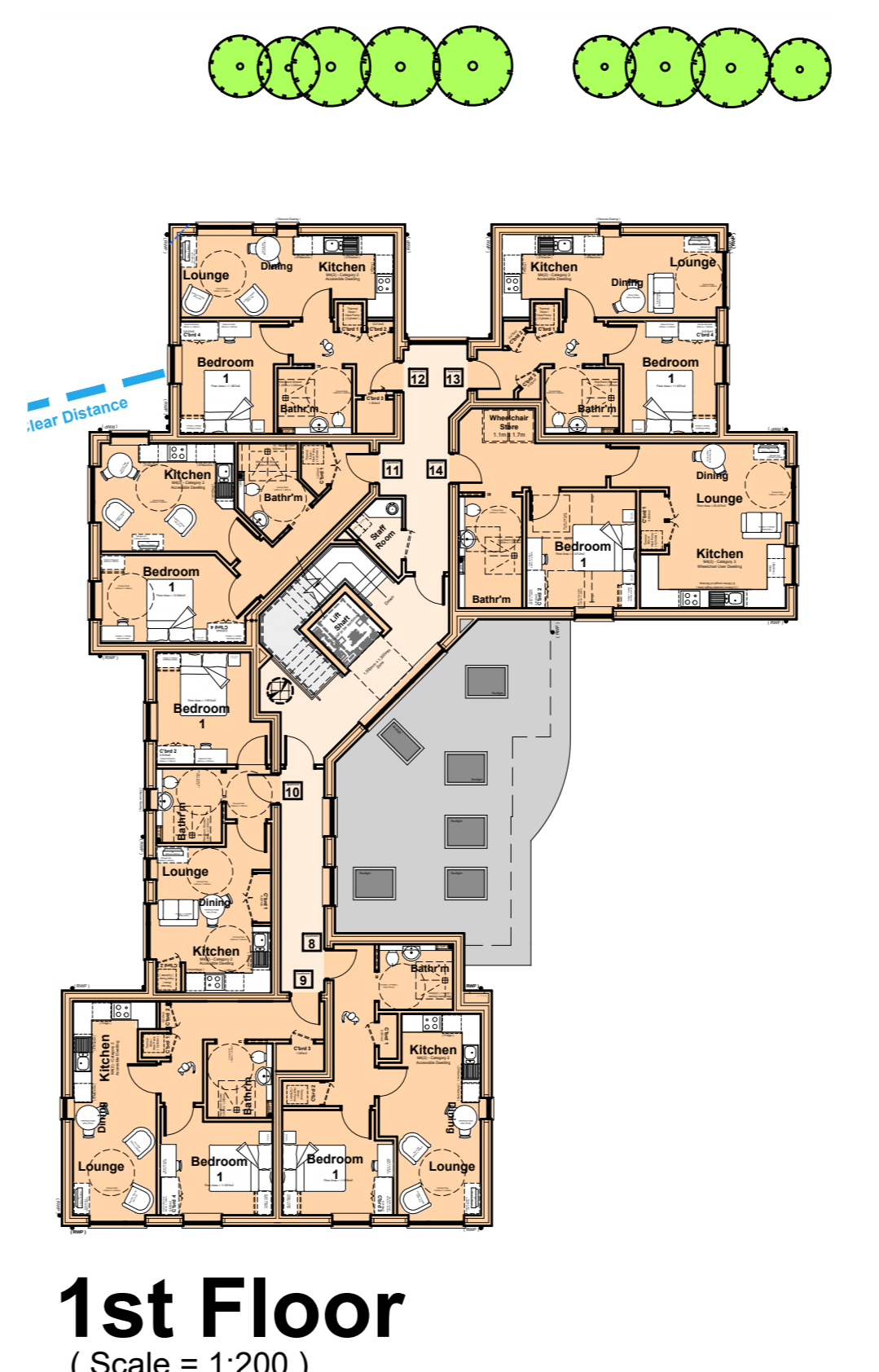
Proposed Rear Elevation (South Elevation)

- New External Materials to consist of:**
- Walls - Facing brickwork, and render colour white.
 - Roof - New roof tiles to be Marley Modern - Slate Grey Concrete Tiles.
 - Windows - Double glazed units, UPVC grey.
 - Downpipes and gutters - Black Plastic, Deep Flow.

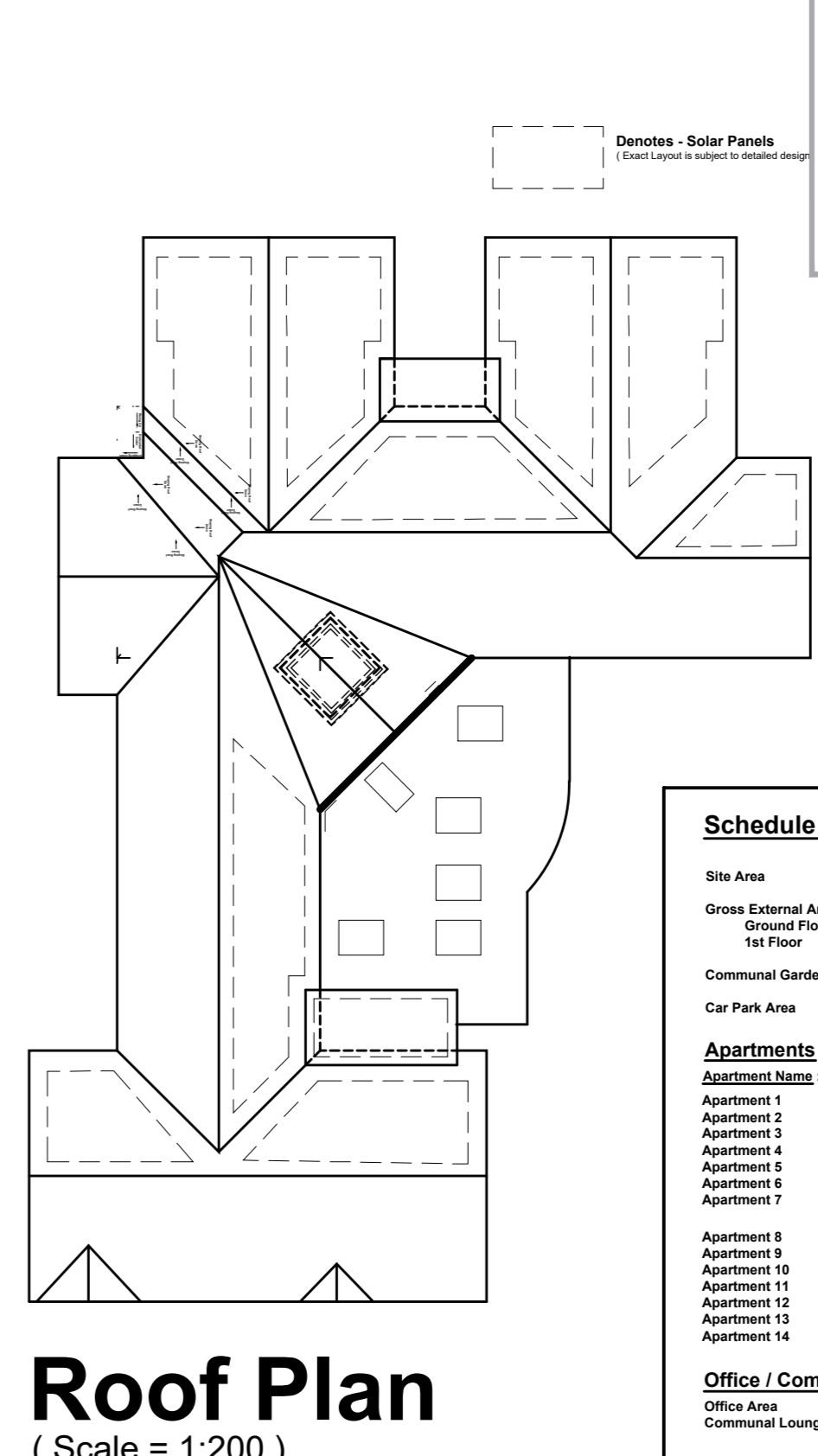


Block Plan

(Scale = 1:500)



1st Floor (Scale = 1:200)



Roof Plan (Scale = 1:200)

HEXAGON PARTNERSHIP LIMITED

Schedule of Accommodation

Apartment No.	Category	Location	Size (sqm)	Part M Category
Apartment 1	Category 2	Apartment 1	65.50	Category 2 - Accessible Dwelling
Apartment 2	Category 2	Apartment 2	65.50	Category 2 - Accessible Dwelling
Apartment 3	Category 2	Apartment 3	65.50	Category 2 - Accessible Dwelling
Apartment 4	Category 2	Apartment 4	65.50	Category 2 - Accessible Dwelling
Apartment 5	Category 2	Apartment 5	65.50	Category 2 - Accessible Dwelling
Apartment 6	Category 2	Apartment 6	65.50	Category 2 - Accessible Dwelling
Apartment 7	Category 2	Apartment 7	65.50	Category 2 - Accessible Dwelling
Apartment 8	Category 2	Apartment 8	65.50	Category 2 - Accessible Dwelling
Apartment 9	Category 2	Apartment 9	65.50	Category 2 - Accessible Dwelling
Apartment 10	Category 2	Apartment 10	65.50	Category 2 - Accessible Dwelling
Apartment 11	Category 2	Apartment 11	65.50	Category 2 - Accessible Dwelling
Apartment 12	Category 2	Apartment 12	65.50	Category 2 - Accessible Dwelling
Apartment 13	Category 2	Apartment 13	65.50	Category 2 - Accessible Dwelling
Apartment 14	Category 2	Apartment 14	65.50	Category 2 - Accessible Dwelling

Proposed

Client: **Hexagon Partnership Ltd**
 Project: **New Supported Social Housing Scheme, Land at Montford, Castle Street, Hadley, Telford, Shropshire, TF1 5QH**
 Drawing: **Proposed Ground Floor Plan & Elevations**
 Date: **08.12.22**
 Drawing No: **ASG21048 - 11**
 Revision: **C**
 Scale: **1:100**

ASG Architects Ltd
 CHARTERED ARCHITECT & CHARTERED ARCHITECTURAL TECHNOLOGISTS

01952 288 292